

## London Art Fair makes a confident return to the capital

20–24 April 2022



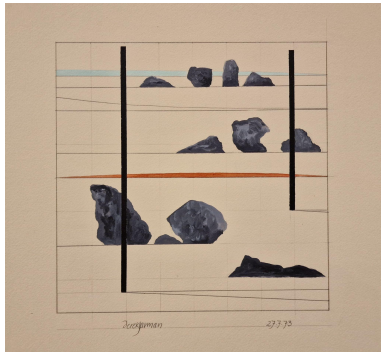
London Art Fair enjoyed a successful return to the capital from 20 – 24 April for its 34th edition. Reporting strong sales and a healthy attendance of buyers and collectors ready to invest in modern and contemporary art from the 100+ galleries who exhibited. Postponed from its usual January date, the Fair saw a strong bounceback following the pandemic, having been held online in 2021.

Sarah Monk, Director of London Art Fair, said: *"It was fantastic to bring the London Art Fair community back together in person and to be connecting great art and people once more. We are incredibly grateful to our galleries, sponsors and partners for their continuing support and invaluable contribution which has allowed us to deliver this 2022 edition and such a wonderful experience for all."*

Alongside many returning galleries including Piano Nobile, Osborne Samuel and Purdy Hicks Gallery, London Art Fair welcomed a host of new exhibitors from overseas, including Kunst ab Hinterhof from Austria, Mollbrinks Art Gallery from Sweden, and La Bibi from Spain. New UK-based galleries for 2022 included GMMX Gallery and Blue Shop Cottage from London, and Contemporary Sculpture Fulmer from Slough.

### HIGHLIGHT SALES

With many of us encouraged to explore and appreciate our immediate surroundings during the pandemic, artworks inspired by London proved popular at the Fair. Kittoe Contemporary sold a new large-scale work depicting the London skyline by Daniel Preece, which was made especially for the Fair, whilst TAG Fine Arts sold multiple editions of *London Rail* by Stephen Walker, which reimagines locations on the underground map according to its famous residents.



Broadbent Gallery also celebrated London as a place of creative inspiration, selling a number of pieces by Derek Jarman created in Liverpool Road, less than 100 yards away from London Art Fair, in the rooms the owner shared with Jarman and other friends. The pieces, which were recently shown at Manchester Art Gallery's major retrospective of Jarman's work *Protest*, went not only to major collectors but also to actors, dancers, and colleagues in the film industry who worked with or knew him.

A number of previously unseen works were sold at the Fair, including John Monks' *Revolution* for £63,000 exhibited by Long & Ryle and the unique etching on paper *The thicket* by Theodore Ereira-Guyer, which sold for £45,000 at Elizabeth Xi Bauer. Meanwhile, Charlie Smith London sold several editions of a print by Beatrix Potter, launched at the Fair in collaboration with the Armitt Museum and Library in the Lake District, who hold an extensive collection of her drawings demonstrating her interest in mycology and natural history.

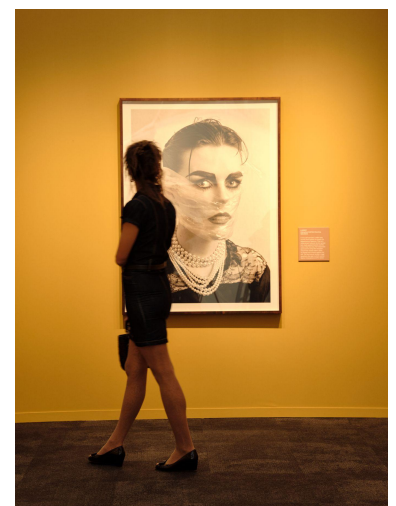
Sculpture sold well at this year's fair, including Harold Parker's bronze *Eurydice, 1907*, which sold for £12,500 at Horton London, and two editions of *Strong Man* by Anna Gillespie at Beaux Arts Bath for £12,950 each. Visitors looking to add unique pieces to their homes were also drawn to ceramics at the Fair, including Barry Stedman's abstract paintings on clay inspired by modern jazz shown by Cavaliero Finn in the Fair's Platform section, Marice Cumber's giant cups decorated with quotes from her diaries exhibited by Louisa Warfield, and plates featuring portraits of female composers Meredith Monk and Anna Meredith sold by Contemporary Applied Arts.

Galleries specialising in Modern British art, a key component of the Fair, also reported healthy sales. Alan Wheatley sold works by Alan Davie, Ivan Hitchens and Andrian Heath, whilst works by Andy Warhol, David Hockney and Pip Todd-Warmouth were sold at Tanya Baxter Contemporary. Gallery Different's presentation dedicated to Denis Bowen, the first public show of his works since his death in 2006, resulted in the sale of the significant piece *Prismatic Planet*.

Contemporary painting also proved popular at the Fair, drawing in a new generation of collectors. Charlotte Keates' success at the Fair continued with Arusha Gallery selling *Each Passing Hour* for £30,000. In Art Projects, figurative works proved especially popular, with Wilder Gallery selling nine pieces by emerging artist Amy Beager and Aleph Contemporary selling two paintings by Joana Galego.

### CURATED SECTIONS

London Art Fair continued to showcase and celebrate regional museum collections through its annual Museum Partnership. This year the selection of **The Women's Art Collection** at Murray Edwards College, University of Cambridge, enjoyed huge engagement from visitors, patrons and collectors alike and highlighted the Fair's commitment to championing female artists and working towards gender parity at the Fair.





Tiffanie Delune's work *No More Battlefields, Only Flowers* shown by Ed Cross Fine Art in Art Projects was acquired by Murray Edwards College after Delune's work impressed the collection's curator Naomi Polonsky and President of the College Dorothy Byrne. The popularity of The Women's Art Collection's display was also credited with encouraging sales of other important female artists, including two Elisabeth Frink drawings which sold for £15,000 each at Christopher Kingzett Fine Art.

Naomi Polonsky said: *"It has been a real delight to showcase The Women's Art Collection to a wider public. It comes at an exciting time for the Collection as it reverts back to its original name and takes on increasingly ambitious projects. We are extremely grateful to the Fair for this wonderful opportunity and thrilled by visitors' responses to our display."*

Music and its connection to visual art was the theme for **Platform** this year. Guest curator Candida Stevens chose nine galleries whose artists have created new work exploring the intersection between the art forms. New galleries to the Fair included Mothflower, who sold work by painter and musician Ian Felice; Zimmer Stewart Gallery, who sold oil paintings by Tom Farthing capturing the exuberance and excitement of the Fairground; and Australian gallery Otomys, who sold new works by American painter Ben Crase. There was a great response to the series by artist David Edmond at Cavaliero Finn, depicting deserted music venues that had been closed during lockdown, with many visitors sharing their memories of the venues depicted.

Visitors to the Fair's Thursday late were treated to a piano recital by Dimitrios Skyllas, created in response to artist Matt Smith's ceramic piece *Notes of a love song* presented at Cynthia Corbett Gallery. The dark tones in the music framed the artwork in a serious light, adding non-verbal commentary to the backstory of the closed factory site and loss of livelihoods that Matt Smith had taken inspiration from.



Candida Stevens said *"Music in art is often a subtle and personal influence, it was therefore fascinating to see what a range of responses the artists came up with. Several musicians had work in the section, Ian Felice with MothFlower, Juliette Bigley with Contemporary Applied Arts, and Ben Crase with Otomys, making for interesting conversations about the shared discipline across music and art. Figurative work dominated with the exception of bold abstract works made in response to Jazz by Nici Bungey and Celia Cook. A great deal of thought and effort by all galleries made for a truly stimulating display."*

This year's **Photo50** exhibition *No Place Is An Island*, curated by Rodrigo Orrantia, interrogated what it means to be an island, echoing John Donne's celebrated book *No Man is an Island*. Bringing together established and mid-career artists whose work questions and redefines the boundaries of photography, the exhibition celebrated connections between artists, mediums and generations. Epitomising this was a collaborative performance piece by Tom Lovelace and Emily Ryalls on Friday 22 April entitled 'Doing and Undoing Islands', a live collage installation

incorporating photography and performance that reflected on how we deal with and negotiate disappearing landscapes. The artists activated images and objects in the space using shadows– allowing them to move, fold, disappear and reappear.

Rodrigo Orrantia said: *"The response to the exhibition has been fantastic. It's been amazing to celebrate the connections between photography and art, pushing boundaries and dreaming of new possibilities. It was very moving to see Tom and Emily's performance after such a long time without live experiences. Responding to photographic images projected onto the screen, and creating shadows with their bodies and sheets of paper, they embodied the dialogue throughout the exhibition between photography, performance and landscape."*

- END -

## **PRESS CONTACT**

For further information please contact Faye Cottrill at Flint Culture:  
[faye.cottrill@flint-culture.com](mailto:faye.cottrill@flint-culture.com) | 0203 470 0094

## **IMAGE CREDITS**

- 1) Artworks by Neale Howells (L) and Makiko Nakamura (R) at London Art Fair 2022 © Mark Cocksedge
- 2) Derek Jarman, Study for Avebury Stones, 1973, mixed media on paper, 24 x 22 cm. Courtesy of Broadbent Gallery
- 3) Each Passing Hour by Charlotte Keates (2021) courtesy of Arusha Gallery
- 4) Tiffanie Delune, No More Battlefields, Only Flowers, 2021, Acrylic, Watercolour Pencil, Pen and Mixed Papers on Paper, 53 x 79 cm. Courtesy of the artist and Ed Cross Fine Art
- 5) Matt Smith, Notes from a Love Song C#, 2016, Black Porcelain, 21 x 23 x 13 cm. Courtesy of Cynthia Corbett Gallery



## EXHIBITOR LIST

<p><b>MAIN FAIR</b></p> <p>&amp;gallery 155A Gallery Advanced Graphics London Alan Wheatley Art Architectural Heritage Ltd Art First ARTE GLOBALE Austin/Desmond Fine Art/ Jack Wakefield Beardsmore Gallery Beaux Arts Bath Blond Contemporary Broadbent Browse &amp; Darby Castlegate House Gallery CHARLIE SMITH LONDON Christopher Kingzett Fine Art Columbia Road Gallery Crane Kalman Brighton Crane Kalman Gallery David Kovats Gallery Duncan R Miller Fine Arts ECAD London Elizabeth Xi Bauer England &amp; Co Fairhead Fine Art</p>	<p>Frederick Charles Art Gala Fine Art Galeria Miquel Alzueta Galerie Olivier Waltman Gallery Different Gallery G-77 GBS Fine Art Gilden's Arts Gallery Glasgow Print Studio Hidden Gallery Horton London James Freeman Gallery James Hyman Fine Art Jealous Gallery Jenna Burlingham Gallery Jill George Gallery John Martin Gallery Julian Page K Contemporary Kittoe Contemporary Lemon Street Gallery Long &amp; Ryle Lychee One Marcus Campbell Art Books MMX Gallery Mollbrinks Art Gallery Olivia Connelly Osborne Samuel Ltd Panter &amp; Hall Piano Nobile Portal Painters</p>	<p>Portland Gallery Purdy Hicks Gallery Quantum Contemporary Art Rabley Gallery RAW Editions Rebecca Hossack Art Gallery Redfern Gallery Rhodes Contemporary Art Rowntree Clark Stoney Road Press TAG Fine Arts Tanya Baxter Contemporary The Drang Gallery The Nine British Art Thomas Spencer Fine Art Thompson's Gallery Union Gallery Waterhouse &amp; Dodd Zuleika Gallery</p> <p><b>ART PROJECTS</b></p> <p>Aleph Contemporary Anima Mundi Arusha Gallery Barn Bradenstoke Contemporary - Sculpture Fulme DOMOBAAL Ed Cross Fine Art Gallery KITAI IMT Gallery</p>	<p>JGM Gallery Kunst ab Hinterhof La Bibi Louisa Warfield Art Consultancy MADEINBRITALLY Perve Galeria Process Gallery Virginia Visual Arts Wilder Gallery Blue Shop Cottage</p> <p><b>PLATFORM</b></p> <p>Candida Stevens Gallery Cavaliero Finn Gallery Contemporary Applied Arts Cynthia Corbett Gallery jaggedart Mothflower Otomys Art Gallery Rup &amp; Form Zimmer Stewart Gallery</p>
--	---	--	---

## LONDON ART FAIR SPONSORS

### ABOUT ARTSCAPY

Artscapy is the online platform for art collecting and this year's digital partner at London Art Fair. Built by collectors for collectors, Artscapy features an end-to-end encrypted collection management system, a curated marketplace, and provenance certification on blockchain. To celebrate the launch, Artscapy is hosting a competition to win an exclusive print worth over £700. For a chance to win, visit Artscapy's booth (S2) at the fair.



### ABOUT VISIT MALTA

Famous for its bountiful art and culture, Malta is certainly a destination that should be on everyone's 2022 travel list. In addition to its delicious gastronomy and incredible experiences, the Maltese art scene is one not to ignore. Malta's art is varied and rich and over the years Maltese art decorated Knights' palaces and churches. With amazing art galleries such as Muza and the National Gallery of fine art, Malta is the ideal getaway for art and history lovers.



### ABOUT KINGSLEY NAPLEY X CREATIVE UNITED

Providing a full suite of client services for the art world. The team includes recognised experts in their field known for advising on matters impacting galleries, artists, auction house and investors. Including art fraud and criminal litigation, reputation management, copyright infringement, global talent immigration, legacy and estate planning as well as property and employment advice.

The Criminal Litigation team will holding drop-in sessions at booth S4 and in the Collector's Lounge to discuss AML for Art Market Participants.



### ABOUT CAMPARI

Campari's evocative history runs parallel to the journey of modern Italy, its birthplace Milan, and the arrival of Aperitivo and the cocktail hour. The story began in 1860, when Gaspare Campari invented the recipe, then started serving bitter cocktails and cordials alongside artisan snacks at his Café Campari overlooking the Duomo. Young Milanese flocked here and later to the Camparino bar when it opened in 1915 in the fashionable Galleria Vittorio Emanuele II.

Since Davide Campari took over the company in 1910, Campari has had a close association with the world of art and design. Davide understood the unrivalled power of design and creativity in building brand

recognition around the world. He engaged the brand with the arts, getting to know leading international designers, illustrators and filmmakers, and in doing so played his part in championing the avant-garde.

Because of this close association with the arts that has lasted over 100 years, Campari will bring the Campari Spiritello bar to London Art Fair.



#### ABOUT VIKING CRUISES

Viking, one of the world's leading small ship cruise lines, is one of this year's sponsors and art plays an important role in their heritage. Viking's onboard art collection is an ode to its Nordic heritage featuring a diverse spectrum of work to complement and enhance the light-filled, Scandinavian-influenced interiors of their ships. Guests can enjoy a guided audio tour of the collection whilst onboard. To find out more and to browse their art catalogues go to: <https://viking.tv/tv/the-viking-world/viking-art-collection>



#### ABOUT AUTHOR INTERIORS

From St Ives to the Scottish Highlands, AUTHOR Interiors sources unique, luxury furniture, gifts, and home décor from independent makers across the British Isles. These functional art pieces are handcrafted with enduring and quality design, making them true investment pieces that will last a lifetime. View AUTHOR's pieces on display in the VIP Lounge at the Fair or visit [www.authorinteriors.com](http://www.authorinteriors.com) to explore their exquisite British Modern collection.



#### ABOUT FORSTERS

Forsters is a leading London law firm based in Mayfair. Forsters Art Group comprises an expert team of lawyers drawn from across the firm who specialise in and, crucially, are passionate about art. We have a wealth of experience acting for collectors, artists, galleries, auction houses, and owners of historic houses.

We enjoy working alongside key industry contacts such as specialist valuers, art advisers and institutions. Our team are uniquely placed to advise on the practical and tax implications of creating, buying, selling and holding works of art and disputes involving art.



## ABOUT BLACKWALL GREEN

Hiscox and Blackwall Green have worked together for many years to provide insurance for museums, art dealers and private collectors, and are delighted to support the London Art Fair as it returns in 2022.

# Blackwall Green

A Gallagher Company

## ABOUT IBI INTERNATIONAL LOGISTICS

IBI International Logistics is a bespoke, family-owned business, bringing forward a fresh, highly efficient, and integrated approach to global fine art logistics. IBI International Logistics harness our Group's far-reaching network and highly skilled team of specialists. We are the trusted partner for renowned institutions, known for our bespoke logistics solutions that reflect the complex demands of the art world, without compromising on supreme privacy and industry-leading standards. Our international clientele span museums, galleries, private collectors, auctioneers, and art fairs amongst others.



## ABOUT TM LIGHTING

TM Lighting is delighted to support The New Hall Art Collection as the Museum Partner Lighting Sponsor of London Art Fair 2022.

TM Lighting manufactures exceptional LED lighting products for the art market including internationally significant collections earning industry recognition as the UK's leading art lighting specialist. TM Lighting picture lights and accent lights bring art to life within residences, stately homes, galleries and contemporary spaces. Recent projects include the Rothschild Foundation, English Heritage, Wellington Collection, Historic Royal Palaces, London Design Festival at V&A Museum, Damien Hirst's 'Pegasus' at Brasserie of Light, Selfridges, Sotheby's Old Masters Sale at Victoria Beckham. [www.tmlighting.com](http://www.tmlighting.com)

# TM LIGHTING

BRINGING ART TO LIGHT